



St Mary's Hospital
 Capital Planning Department, Exton 5,
 Milton Road, Portsmouth, Hants
 Tel: 01705 866452, Fax: 01705 866385

Fax

To: Penny Humphres From: Sarah Smart
 Fax: Code A Pages: 5 incl. this
 Date: 4.2.99
 Re: Partnership Structure CC:

Urgent For Review Please Comment Please Reply Please Recycle

● Comments:

*Hope this reflects our discussion.
 Dick has seen & is fine.*

**Finance and
Contracts**

Financial and contractual modelling	<ul style="list-style-type: none"> • Finance Directors (PHT, PHA) • AD Finance (DSCA) – K Green • AD Corp Plan (DSCA) – J Smellie • Stephen Campion (RHH) • Director – Strategic Alliances (PHT)
Interim Schemes Equipment	<ul style="list-style-type: none"> • Director – Cap Plan (PHT) • Stephen Campion (RHH) • Mike Evans (DSCA) • Ass Dir Finance (DSCA) – K Green
Integration Health Records	<ul style="list-style-type: none"> • Head of IM&T (PHT, PHCT, PHA) • Ass Dir IT (DSCA) J Wilkinson • Stephen Campion (RHH) • (Health Records)
Integration	<ul style="list-style-type: none"> • Director of Estates (PHT) • Jeff Watling (PHT) • OSCU (RHH) • Mike Evans (DSCA)

Capital

IM&T

Non-Clinical Services

STRUCTURE

FUNCTIONS

POSSIBLE MEMBERSHIP

Partnership Board

<ul style="list-style-type: none"> • 	<ul style="list-style-type: none"> • Chief Execs of PHT, RHH, PHCT, DSCA, PHA • Medical Directors • Director of Development, DSCA • Director – Strategic Alliances • Partnership Project Manager • Deans • PCG
---	---

P.H.T.

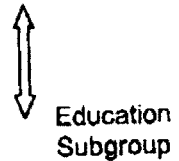
Integration Project Board

<ul style="list-style-type: none"> • Co-ordination of working groups • Timetabling • Cross over to PFI • Communication 	<ul style="list-style-type: none"> • Director – Strategic Alliances (PHT) • Project Manager (DSCA) • Nurse Directors (PHT, RHH) • Operational Directors (PHT, RHH, SC) • Clinical Directors (PHT and RHH) • OCSU (RHH) • Director – Capital Programmes (PHT)
--	---

Working Groups

Clinical Integration

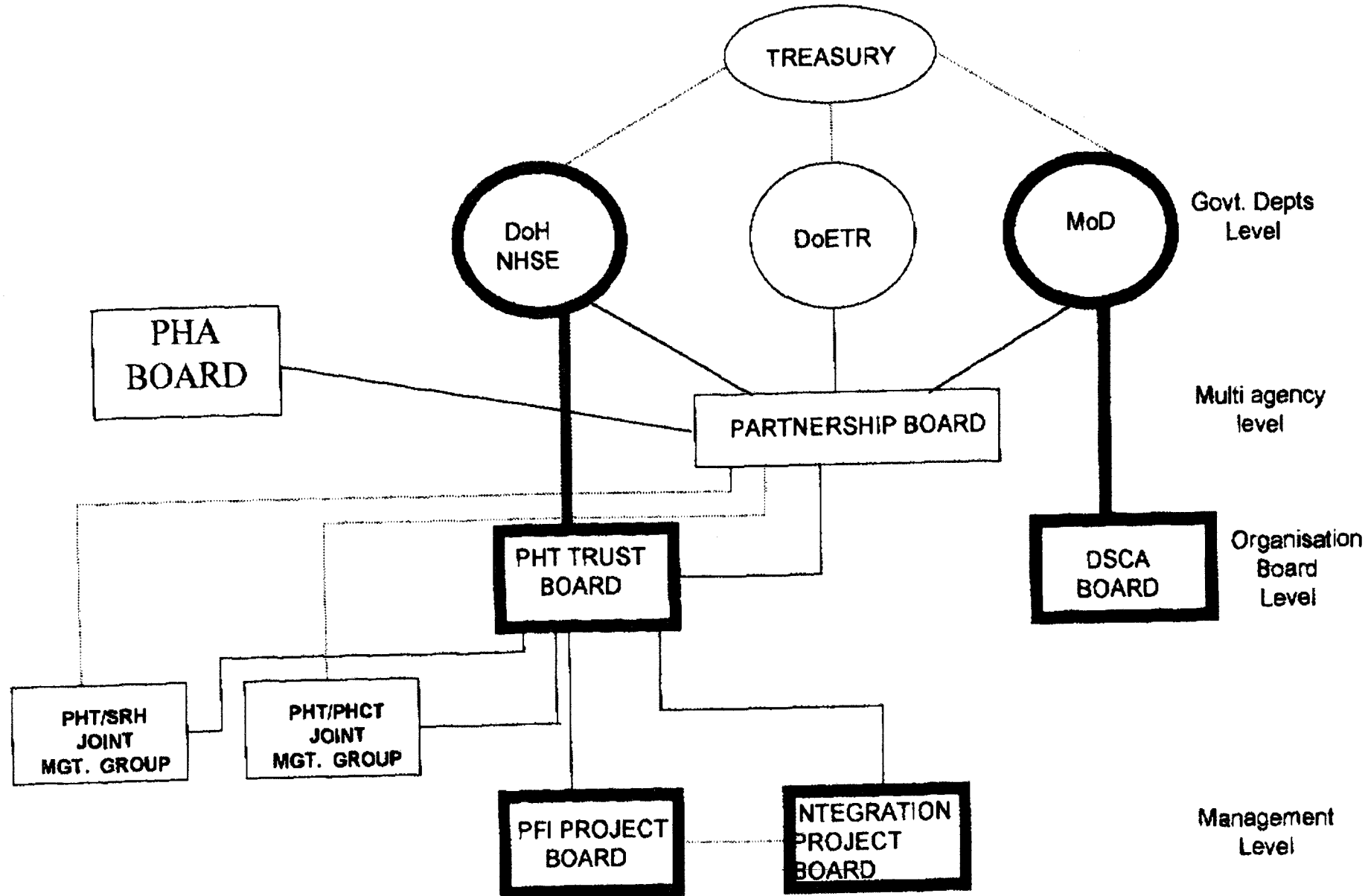
<ul style="list-style-type: none"> • Clinical and Management Integration • Professional Structures • Governance • Education and Training • Manpower Planning • Risk 	<ul style="list-style-type: none"> • Director – Strategic Alliances and DSCA • Medical Directors (PHT, RHH, PHCT) • CDs (PHT, RHH) • Nurse Directors (PHT, RHH) • Directors of Medical Education
---	---



HRM

<ul style="list-style-type: none"> • Management Development • Consultation • Education and Training • Contracts 	<ul style="list-style-type: none"> • HR Director (PHT) • OCSU (RHH) • AD Civ Pers (DSCA) - C Case • AD Med (DSCA) – R Dale
---	--

STAKEHOLDER ENVIRONMENT



PARTNERSHIP STRUCTURE PHA/PHT/DSCA

