

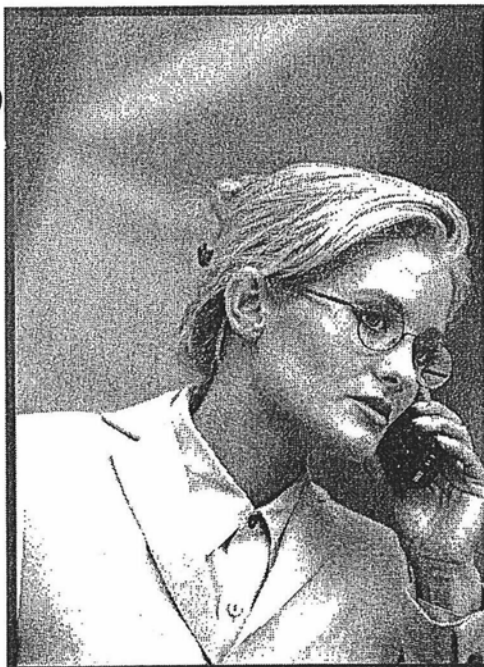
Portsmouth Hospitals **NHS**
NHS Trust

Are you
Concerned about
WRONGDOING
Where you work?



**HELP TO STOP ILLEGAL AND DANGEROUS ACTIVITY,
STOP WASTE, STOP THE THEFT OF NHS RESOURCES**

The Trust's **Whistle Blowing** policy actively encourages staff to voice any genuine concerns they might have ensuring that they are protected from victimisation or reprisal



Telephone in confidence
Internal **7701 3290**
External **02392 866290**
Or put your concerns in writing to
Room 114,
The Management Centre,
St. Mary's Hospital,
Portsmouth. PO6 3AD.

Look on the Intranet under Human Resources for the full policy.