

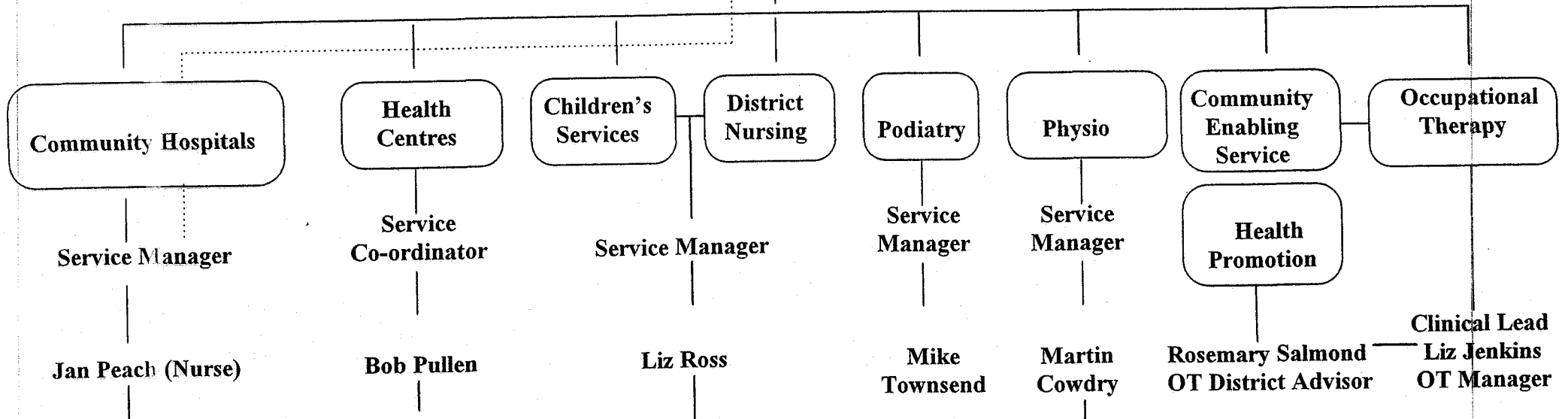
Fareham & Gosport Locality Division

Nursing Director

Operational Director

General Manager

Fiona Cameron (Nurse)



GWMH
St Xs } All staff
Sylvan }
*Redclyffe
*Summervale
* Not clinical staff

Health Centres:
Fareham
Lee-on-Solent
Rowner
Portchester
Gosport

Western Wards
Community Health Office

- Child and Family Therapy
- Health Visiting
- District Nursing
- Night Nursing
- School Nursing

Hill Park
GWMH
St Xs

Key
..... = Nursing Accountability/
Clinical Governance Pathway